

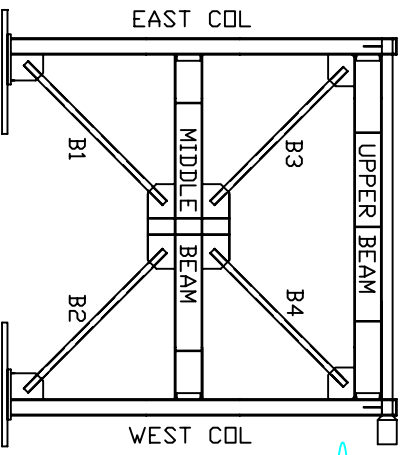
GENERAL NOTES

- KEY**
- POTENTIOMETER
 - LOCATED AT TOP FACE
 - LOCATED AT BOTTOM FACE
 - DIRECTION
 - DUT IS POSITIVE
 - PLYWOOD DDP POT

ABBREVIATIONS

- E EAST
- W WEST
- C CENTER
- UPP UPPER
- MID MIDDLE
- LOW LOWER
- BM BEAM
- COL COLUMN
- GUS GUSSET
- PL PLATE
- ROT ROTATION
- DUT OF PLANE
- CONN CONNECTION
- DISP DISPLACEMENT
- HORIZ HORIZONTAL
- VERT VERTICAL
- MIDPT MIDDPOINT
- QRPT QUARTERPOINT

DESIGNATION



DESCRIPTION	RANGE +/-	FREEDOM	DESCRIPTION	RANGE +/-	FREEDOM
1 E ANCHOR PL SLIP	25mm		51 UPP W GUS DDP LOW EDGE	100mm	HORIZ
2 E ANCHOR PL UPLIFT	25mm		52 B4 DDP DISP AT MIDPT	800mm	HORIZ
3 E BASE PL SLIP	25mm		53 B2 2ND DDP DISP AT QRPT	250mm	HORIZ
4 E BASE PL UPLIFT	25mm		54 C GUS DDP W UPP EDGE	100mm	HORIZ
5 E COL ROT AT LOW GUS EDGE	50mm		55 C GUS DDP UPP W EDGE	100mm	HORIZ
6 E COL ROT AT LOW GUS EDGE	50mm		56 C GUS DDP UPP W C	100mm	HORIZ
7 MID BM FRAME DRIFT	300mm		57 C GUS DDP UPP C	25 mm	HORIZ
8 E SHEAR CONN ROT MID BM	50mm		58 MID BM DDP ROT C GUS	25mm	HORIZ
9 E SHEAR CONN ROT MID BM	50mm		59		
10 E COL ROT AT UPP GUS EDGE	50mm		60 MID BM ROT AT C GUS E EDGE	50mm	
11 E COL ROT AT UPP GUS EDGE	50mm		61 MID BM ROT AT C GUS E EDGE	50mm	
12 UPP BM FRAME DRIFT	400mm		62 MID BM DDP ROT C GUS W EDGE	25mm	HORIZ
13 UPP BM ROT AT E GUS EDGE	50mm		63 MID BM DDP ROT C GUS W EDGE	25mm	HORIZ
14 UPP BM ROT AT E GUS EDGE	50mm		64 C GUS DDP LOW C	25mm	HORIZ
15			65 VERT DISP MIDPT C GUS	50mm	HORIZ
16 UPP BM ROT AT W GUS EDGE	50mm		66 C GUS DDP LOW W C	100mm	HORIZ
17 UPP BM ROT AT W GUS EDGE	50mm		67 C GUS DDP LOW W EDGE	100mm	HORIZ
18 W COL ROT AT UPP GUS EDGE	50mm		68 C GUS DDP W LOW EDGE	100mm	HORIZ
19 W COL ROT AT UPP GUS EDGE	50mm		69 B2 DDP DISP AT QRPT	250mm	HORIZ
20 W SHEAR CONN ROT MID BM	50mm		70A B2 DDP DISP AT MIDPT	800mm	HORIZ
21 W SHEAR CONN ROT MID BM	50mm		71 LOW W GUS DDP E EDGE	150mm	
22 W COL ROT AT LOW GUS EDGE	50mm		72 LOW W GUS DDP UPP EDGE	150mm	
23 W COL ROT AT LOW GUS EDGE	50mm		73 LOW W GUS DDP UPP EDGE	150mm	
24 W BASE PL UPLIFT	25mm		74 ACTUATOR BASE PL UPLIFT 1	25mm	
25 W BASE PL SLIP	25mm		75 ACTUATOR BASE PL UPLIFT 2	25mm	
26 W ANCHOR PL UPLIFT	25mm		76		
27 W ANCHOR PL SLIP	25mm		77		
28 LOW E GUS DDP C	150mm		78 B1 BRACE DIAGONAL	250mm	
29 LOW E GUS DDP UPP EDGE	150mm		79 B1 BRACE DIAGONAL	250mm	
30 LOW E GUS DDP W EDGE	150mm		80 B2 BRACE DIAGONAL	250mm	
31 B1 DDP DISP AT MIDPT	800mm	HORIZ	81 B2 BRACE DIAGONAL	250mm	
32 B1 DDP DISP AT QRPT	250mm	HORIZ	82 B3 BRACE DIAGONAL	250mm	
33 C GUS DDP LOW E EDGE	150mm	HORIZ	83 B3 BRACE DIAGONAL	250mm	
34 C GUS DDP E LOW EDGE	150mm	HORIZ	84 B4 BRACE DIAGONAL	250mm	
35 C GUS DDP LOW E CENTER	150mm	HORIZ	85 B4 BRACE DIAGONAL	250mm	
36 HOR DISP C GUS	50mm	HORIZ	86		
37 MID BM DDP ROT C GUS E EDGE	25mm	HORIZ	87		
38 MID BM DDP ROT C GUS E EDGE	25mm	HORIZ	88		
39 MID BM ROT AT C GUS E EDGE	50mm	HORIZ	89		
40 MID BM ROT AT C GUS E EDGE	50mm	HORIZ	90 C GUS PLYWOOD DDP UPP RIGHT		
41 C GUS DDP UPP E C	100mm	HORIZ	91 C GUS PLYWOOD DDP UPP LEFT		
42 C GUS DDP UPP E EDGE	100mm	HORIZ	92 C GUS PLYWOOD DDP LOW LEFT		
43 C GUS DDP E UPP EDGE	100mm	HORIZ	93 C GUS PLYWOOD DDP LOW RIGHT		
44 B1 2ND DDP DISP AT QRPT	250mm	HORIZ	94		
45 B3 DDP DISP AT MIDPT	800mm	HORIZ	95		
46 UPP E GUS DDP LOW EDGE	100mm	HORIZ	96		
47 UPP E GUS DDP W EDGE	100mm	HORIZ	97		
48 UPP E GUS DDP C	100mm	HORIZ	98		
49 UPP W GUS DDP C	100mm	HORIZ	99		
50 UPP W GUS DDP E EDGE	100mm	HORIZ	100		

TCBF1 - TOMORROW'S CONCENTRIC BRACED FRAME 1

NEES/SG NCGREE BRACED FRAME TEST INSTRUMENTATION DRAWINGS

DRAWN BY: KAC
 DESIGNED BY: JAP & KAC
 CHECKED BY: JAP
 DATE: NOVEMBER 26, 2007
 CONTACT: CROEDER@UWASHINGTON.EDU